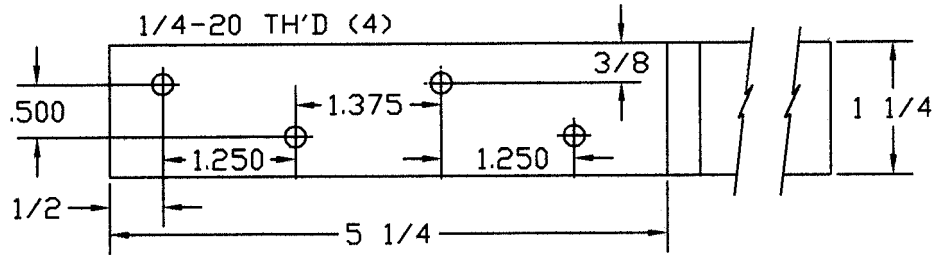


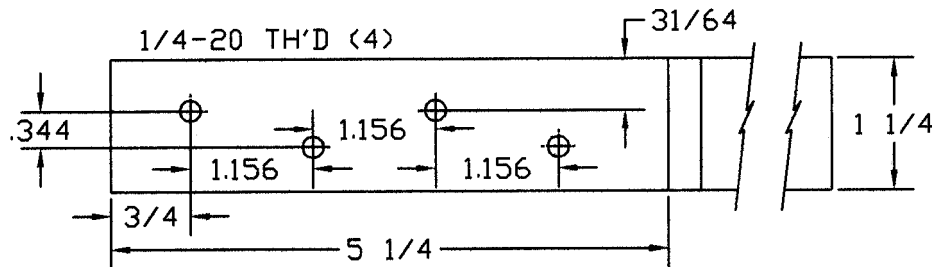
PIVOT & MISCELLANEOUS REINFORCEMENTS

PART NO.

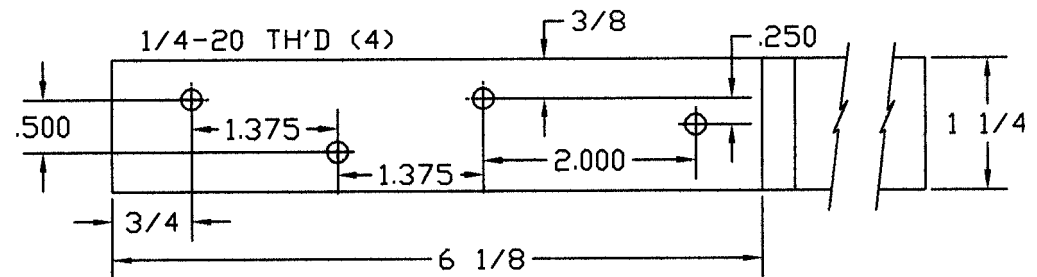
PRRX01
7GA x 1 1/4 x 8 1/2
LEFT HAND SHOWN



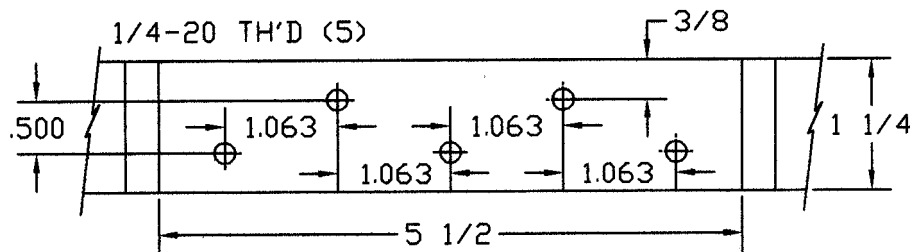
PRRX02
7GA x 1 1/4 x 8 1/2
LEFT HAND SHOWN



PRRX03
7GA x 1 1/4 x 8 1/2



PRRX04
7 GA x 1 1/4 x 12
x 1/4 OFFSET



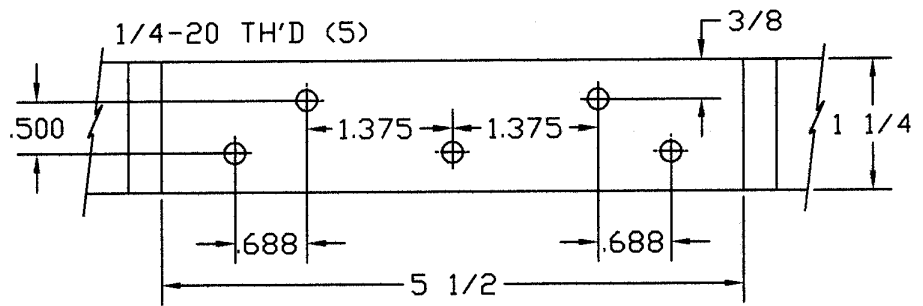
ALL SKETCHES SHOW EARS UP



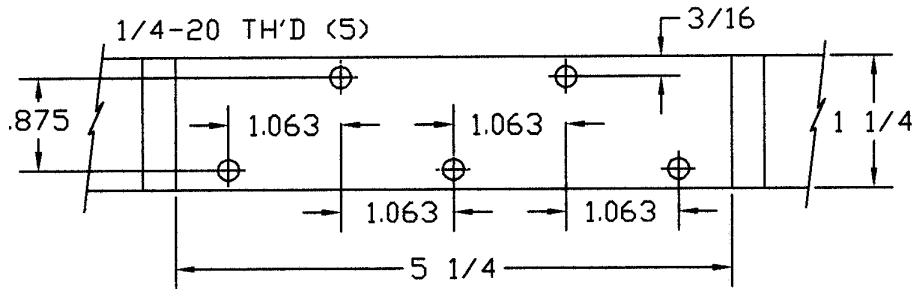
PIVOT & MISCELLANEOUS REINFORCEMENTS

PART NO.

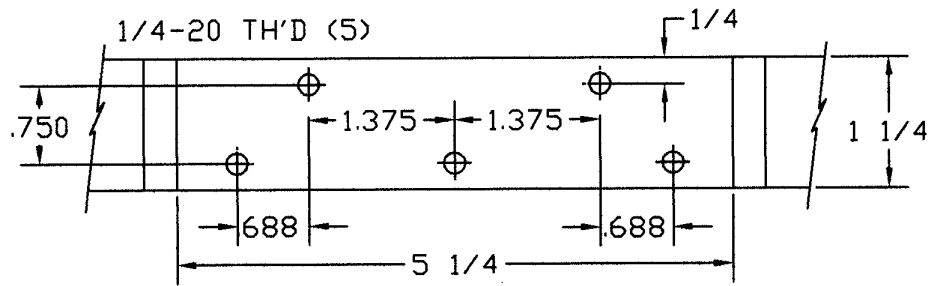
PRRX05
7 GA x 1 1/4 x 12



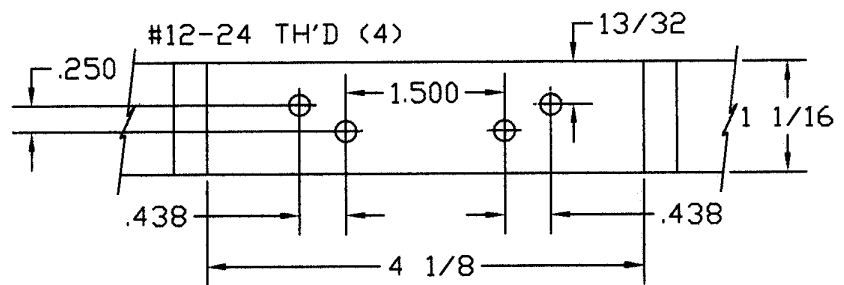
PRRX06
7 GA x 1 1/4 x 12



PRRX07
7 GA x 1 1/4 x 12



PRRX08
7 GA x 1 1/16 x 8 1/2
10 GA x 1 1/16 x 8 1/2



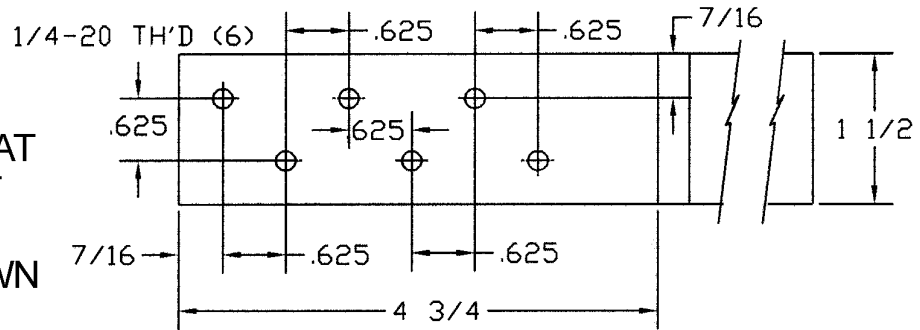
ALL SKETCHES SHOW EARS UP



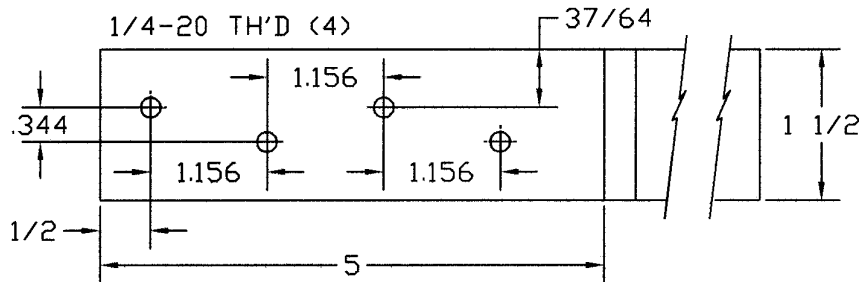
PIVOT & MISCELLANEOUS REINFORCEMENTS

PART NO.

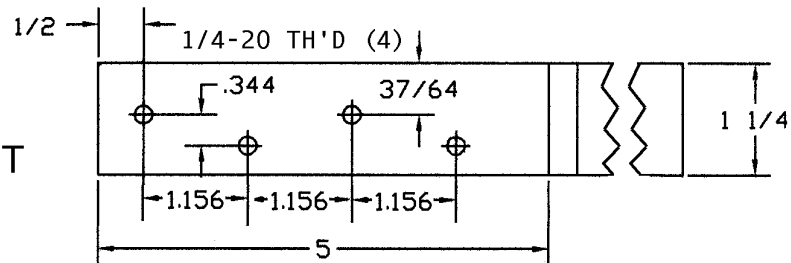
PRRX09
 7GA x 1 1/2 x 8 FLAT
 Or x 5/16 OFFSET
 R.H. or L.H.
 LEFT HAND SHOWN



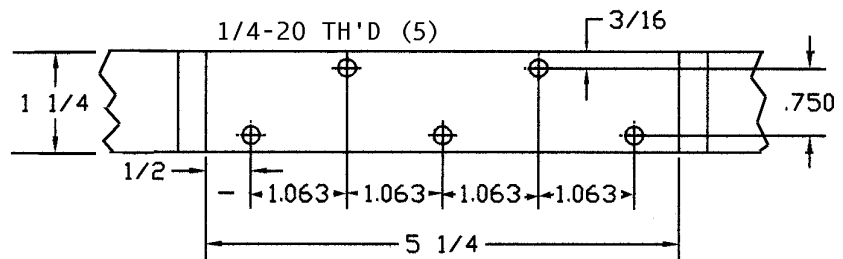
PRRX10
 7GA x 1 1/2 x 8 FLAT
 Or x 3/16 OFFSET
 R.H. or L.H.
 LEFT HAND SHOWN



PRRX11
 7GA x 1 1/4 x 8
 FLAT or x 3/16 OFFSET
 R.H. or L.H.
 LEFT HAND SHOWN



PRRX12
 7GA x 1 1/4 x 12
 x 1/4 OFFSET



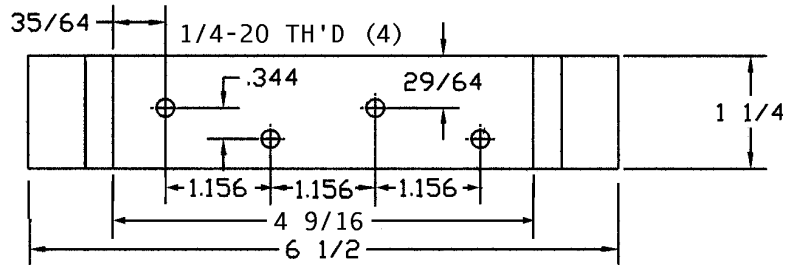
ALL SKETCHES SHOW EARS UP



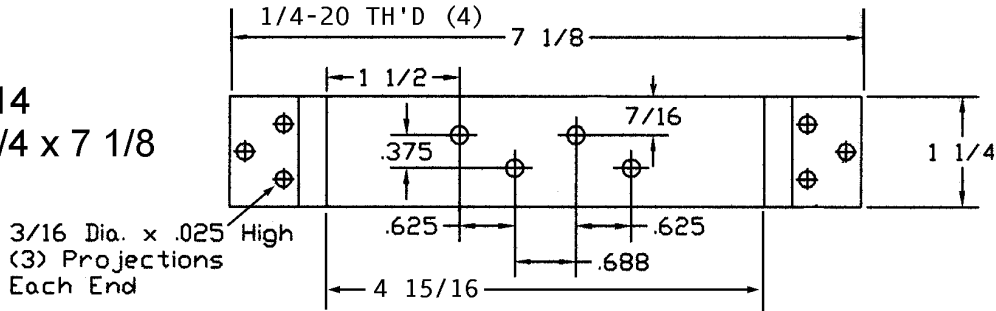
PIVOT & MISCELLANEOUS REINFORCEMENTS

PART NO.

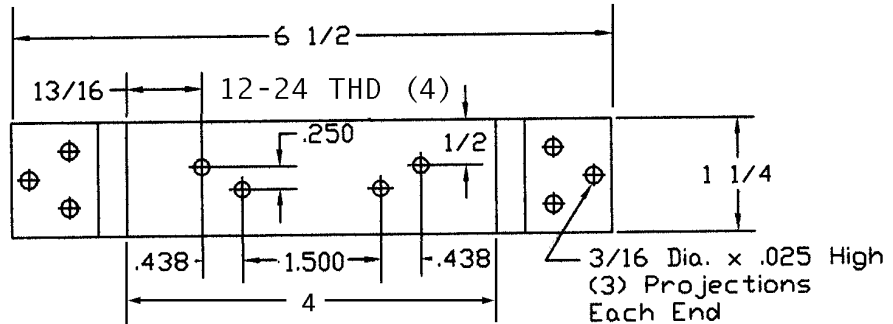
PRRX13
7GA x 1 1/4 x 6 1/2
x 3/16 OFFSET



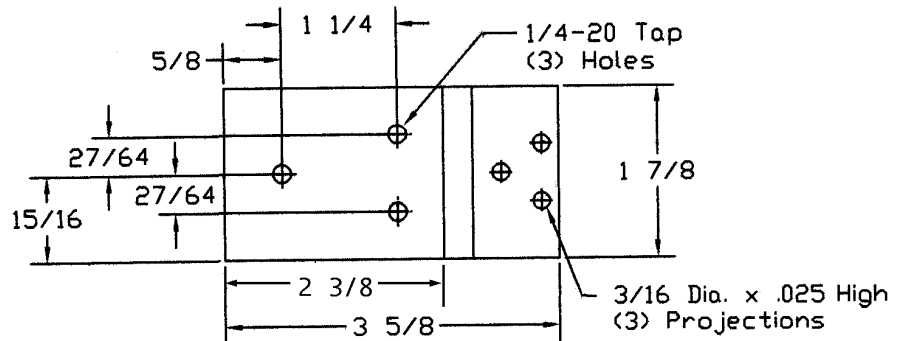
PRRX14
7GA x 1 1/4 x 7 1/8



PRRX16
7GA x 1 1/4 x 6 1/2



PRRX17
7GA x 1 7/8 x 3 5/8
x 9/64 OFFSET



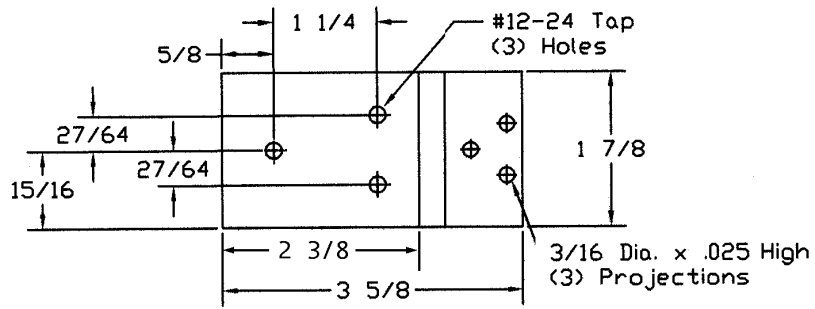
ALL SKETCHES SHOW EARS UP



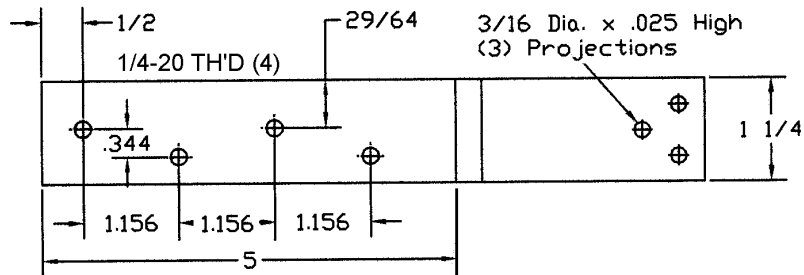
PIVOT & MISCELLANEOUS REINFORCEMENTS

PART NO.

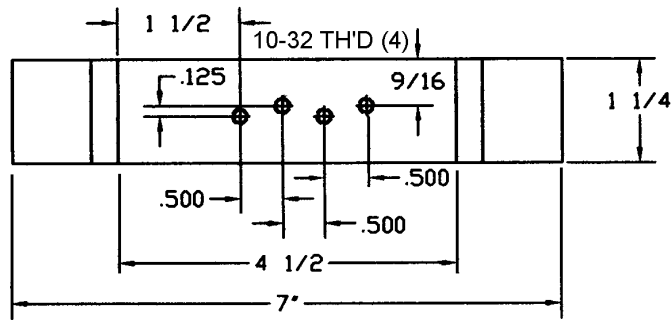
PRRX18
7GA x 1 7/8 x 3 5/8



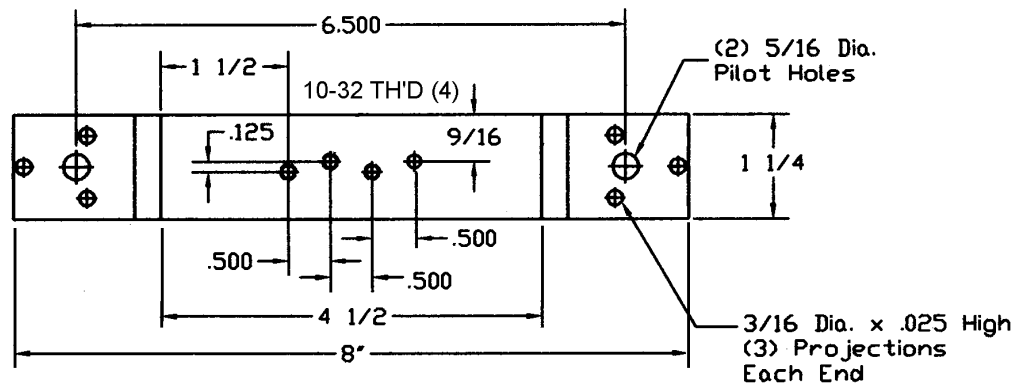
PRRX19
7GA x 1 1/4 x 8
x 3/16 OFFSET
L.H. or R.H.
LEFT HAND SHOWN



PRRX20
10GA x 1 1/4 x 7



PRRX21
7GA x 1 1/4 x 8



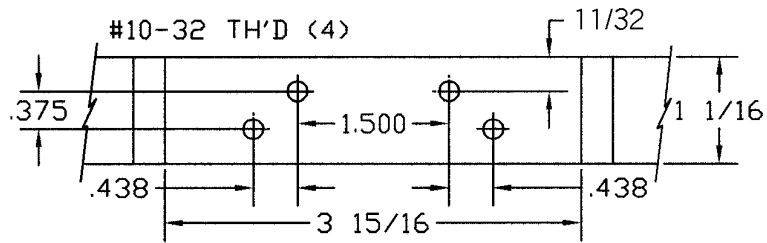
ALL SKETCHES SHOW EARS UP



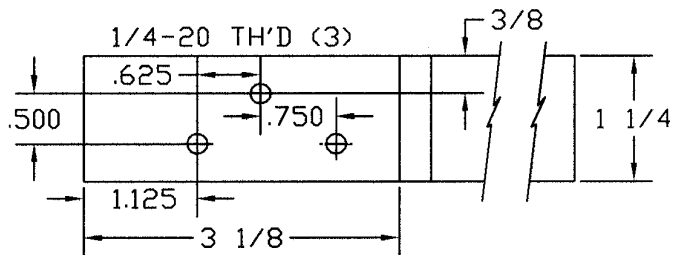
PIVOT & MISCELLANEOUS REINFORCEMENTS

PART NO.

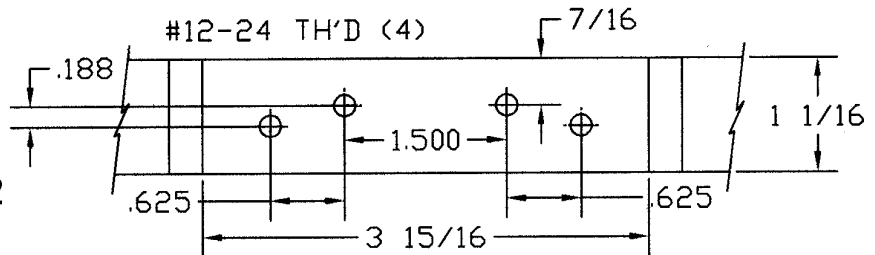
PRGOO1
 10 GA x 1 1/16 x 8 1/2
 x 1/8 OFFSET



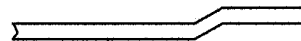
PRST01
 7 GA x 1 1/4 x 6 1/2
 x 13/64 OFFSET



PRSA01
 10 GA x 1 1/16 x 8 1/2



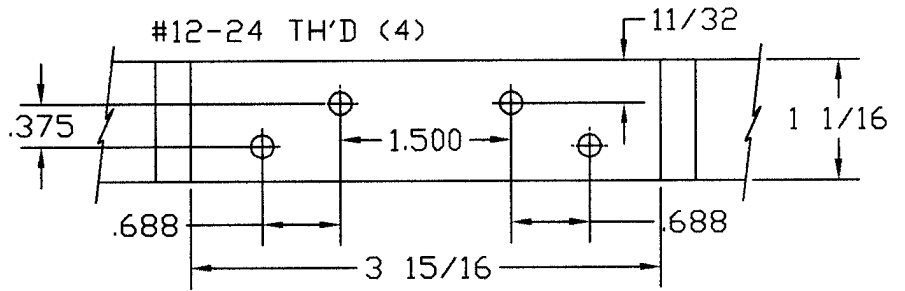
ALL SKETCHES SHOW EARS UP



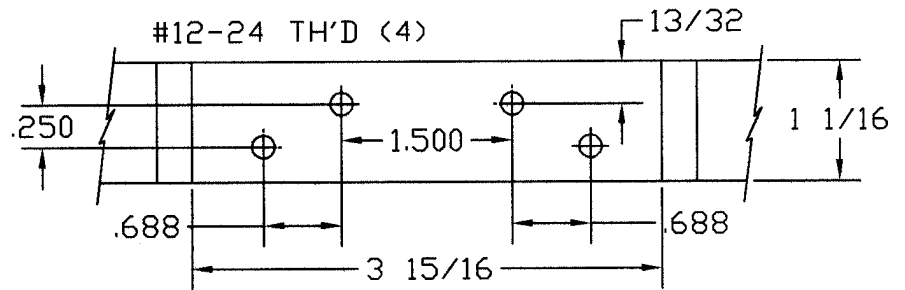
PIVOT & MISCELLANEOUS REINFORCEMENTS

PART NO.

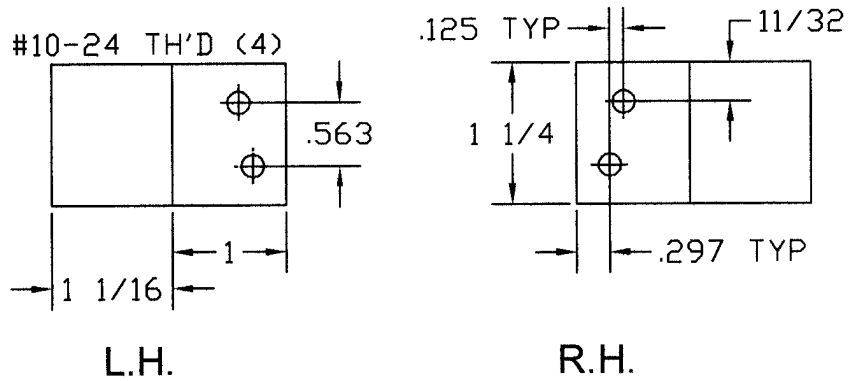
PRR001
10 GA x 1 1/16 x 8 1/2



PRR002
10 GA x 1 1/16 x 8 1/2



HRSS01
7 GA x 1 1/4 x 2 1/16
x 3/8 OFFSET
(2 PCS)



ALL SKETCHES SHOW EARS UP

