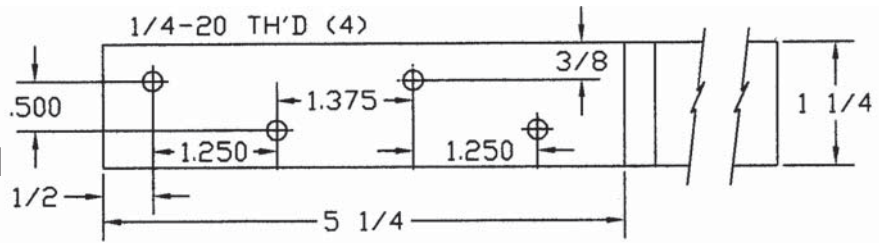


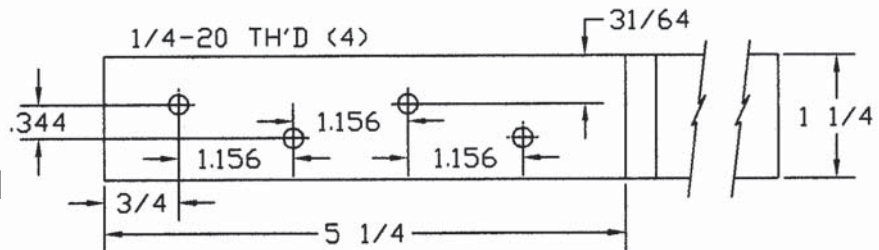
# PIVOT & MISCELLANEOUS REINFORCEMENTS

PART NO.

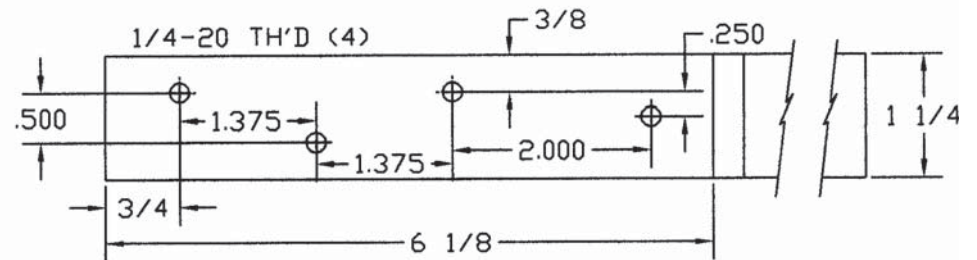
PRRX01  
7GA x 1 1/4 x 8 1/2  
LEFT HAND SHOWN



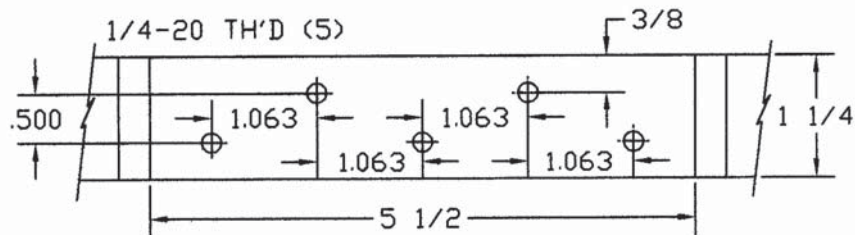
PRRX01  
7GA x 2 1/4 x 8 1/2  
LEFT HAND SHOWN



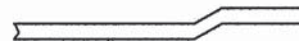
PRRX03  
7GA x 1 1/4 x 8 1/2



PRRX04  
7GA x 1 1/4 x 12  
x 1/4 OFFSET



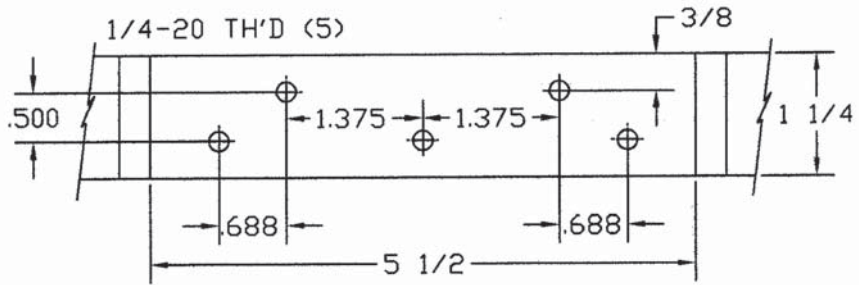
ALL SKETCHES SHOW EARS UP



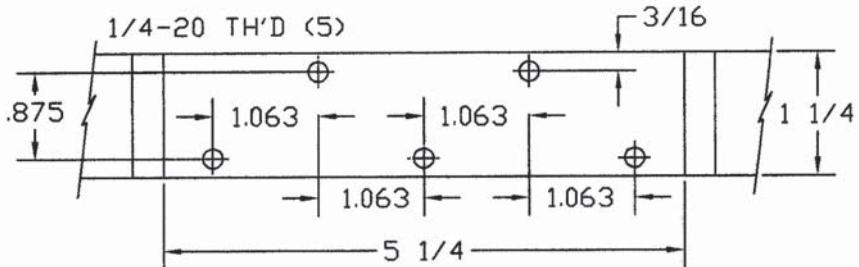
# PIVOT & MISCELLANEOUS REINFORCEMENTS

PART NO.

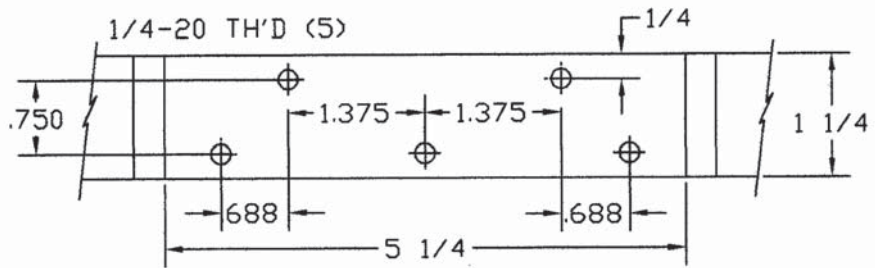
PRRX05  
7GA x 1 1/4 x 8 1/2



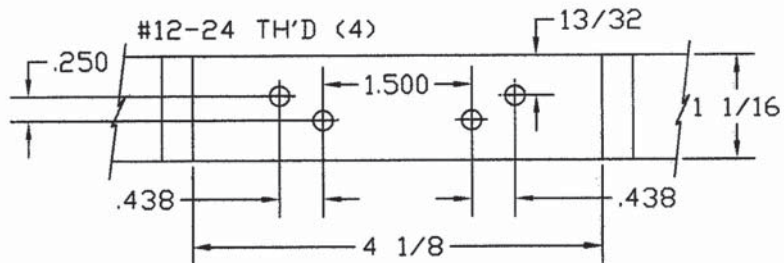
PRRX06  
7GA x 2 1/4 x 8 1/2



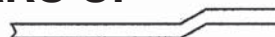
PRRX07  
7GA x 1 1/4 x 8 1/2



PRRX08  
7GA x 1 1/16 x 8 1/2  
10GA x 1 1/16 x 8 1/2



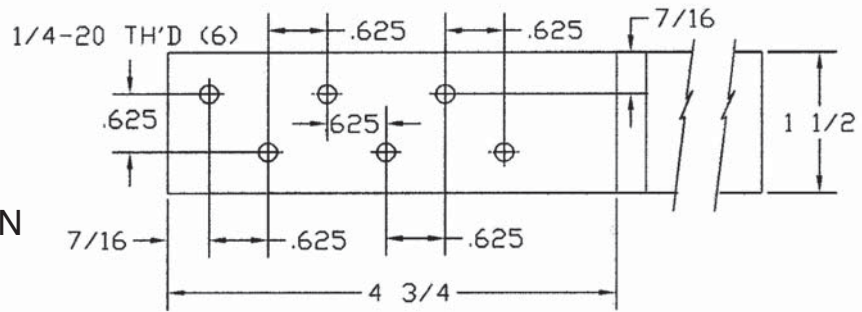
**ALL SKETCHES SHOW EARS UP**



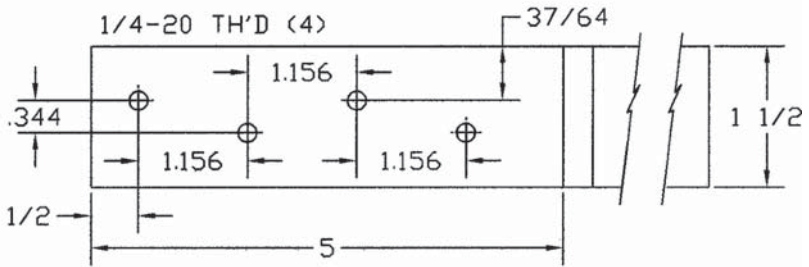
# PIVOT & MISCELLANEOUS REINFORCEMENTS

PART NO.

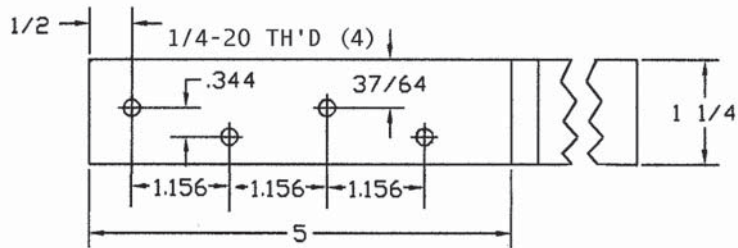
PRRX09  
 7GA x 1 1/2 x 8  
 R.H. or L.H.  
 LEFT HAND SHOWN



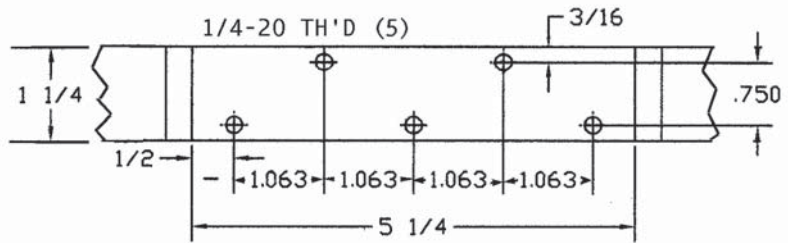
PRRX10  
 7GA x 1 1/2 x 8  
 R.H. or L.H.  
 LEFT HAND SHOWN



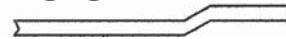
PRRX11  
 7GA x 1 1/4 x 8  
 R.H. or L.H.  
 LEFT HAND SHOWN



PRRX12  
 7GA x 1 1/4 x 12  
 x 1/4 OFFSET



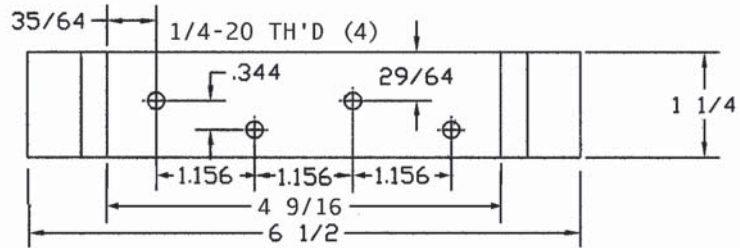
**ALL SKETCHES SHOW EARS UP**



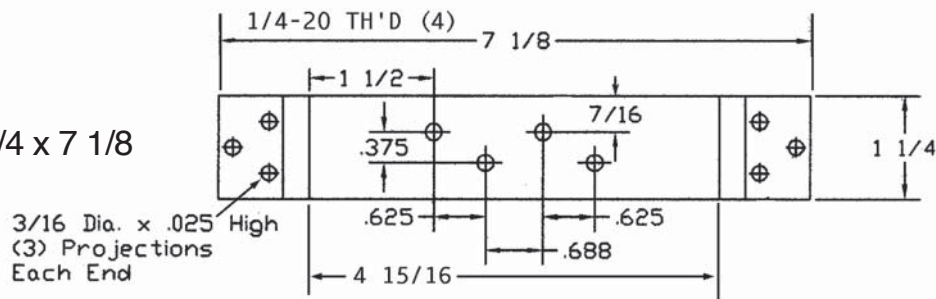
# PIVOT & MISCELLANEOUS REINFORCEMENTS

PART NO.

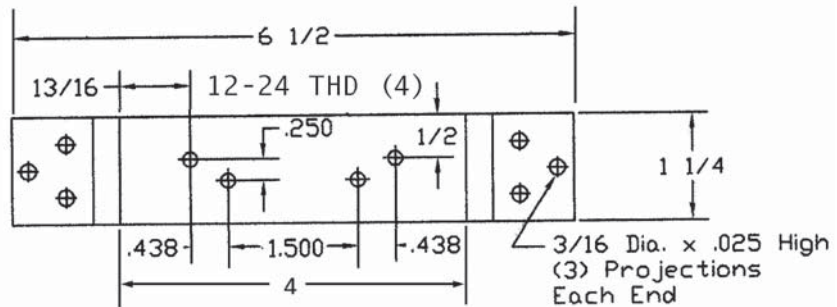
**PRRX13**  
7GA x 1 1/4 x 6 1/2  
x 3/16 OFFSET



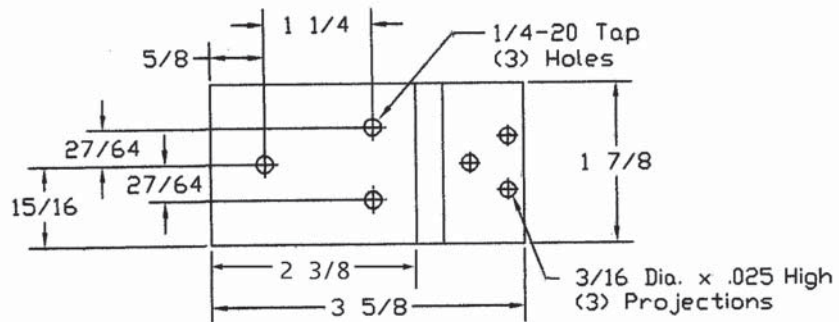
**PRRX14**  
7GA x 1 1/4 x 7 1/8



**PRRX16**  
7GA x 1 1/4 x 6 1/2



**PRRX17**  
7GA x 1 7/8 x 3 5/8  
x 9/64 OFFSET



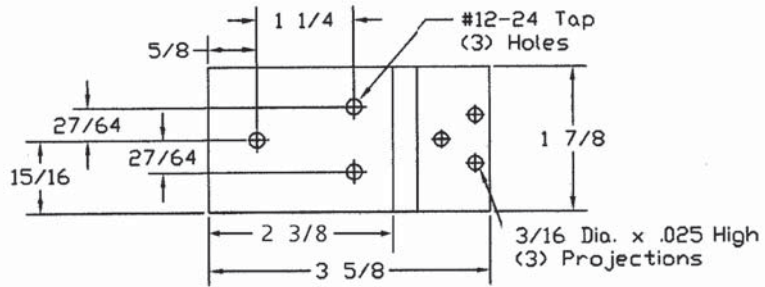
**ALL SKETCHES SHOW EARS UP**



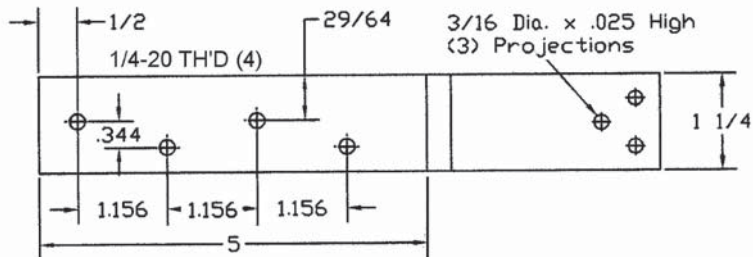
# PIVOT & MISCELLANEOUS REINFORCEMENTS

PART NO.

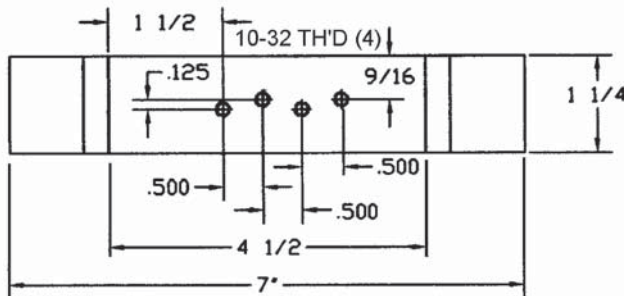
PRRX18  
7GA x 1 7/8 x 3 5/8



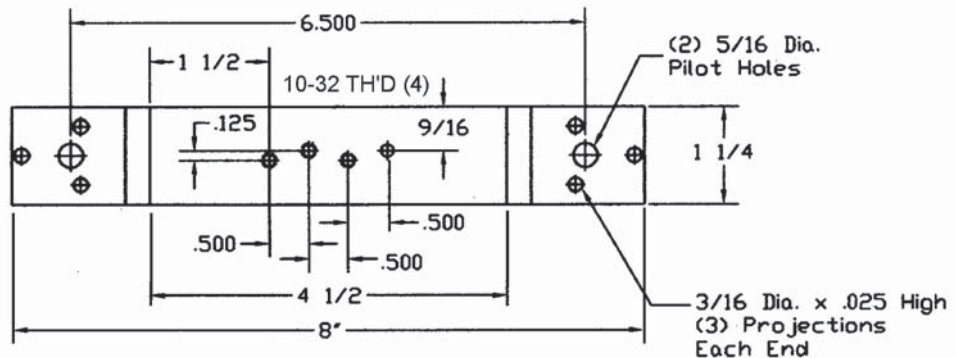
PRRX19  
7GA x 1 1/4 x 8  
x 3/16 OFFSET  
R.H. or L.H.  
LEFT HAND SHOWN



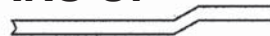
PRRX20  
10GA x 1 1/4 x 7



PRRX21  
7GA x 1 1/4 x 8



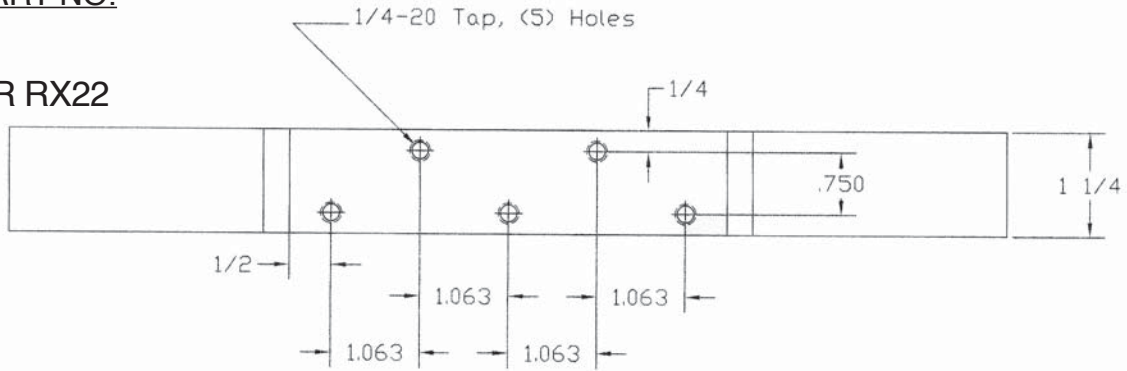
**ALL SKETCHES SHOW EARS UP**



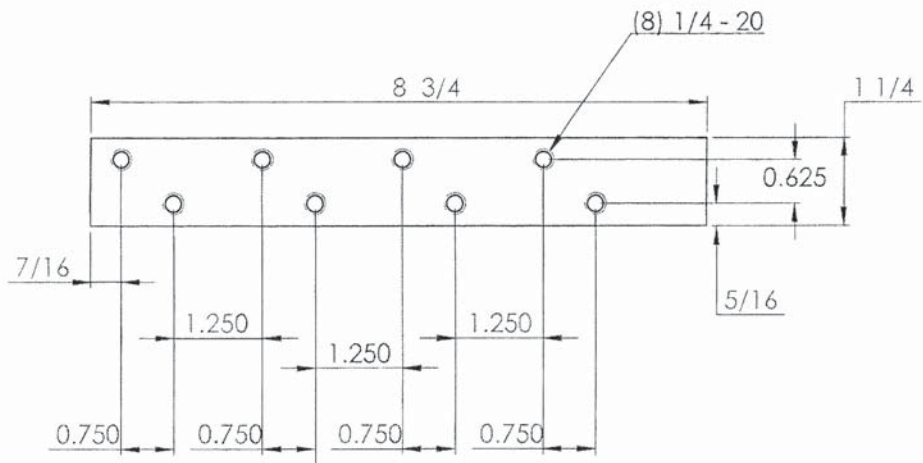
# PIVOT & MISCELLANEOUS REINFORCEMENTS

PART NO.

PR RX22

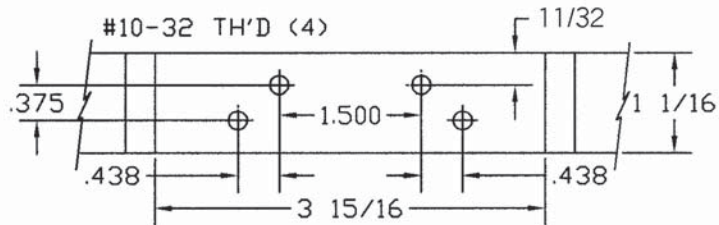


PR RX23



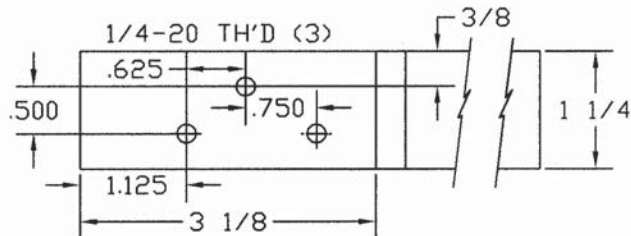
PRGOO1

10GA x 1 1/16 x 8 1/2  
x 1/8 OFFSET

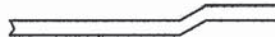


PRST01

7GA x 1 1/4 x 6 1/2  
x 13/64 OFFSET



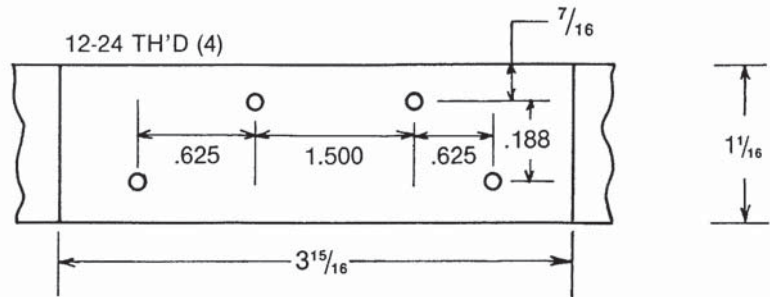
**ALL SKETCHES SHOW EARS UP**



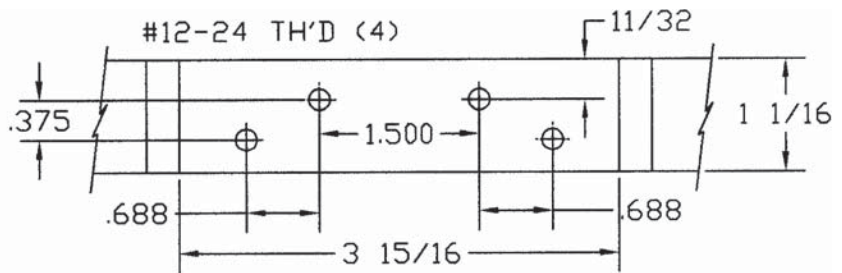
# PIVOT & MISCELLANEOUS REINFORCEMENTS

PART NO.

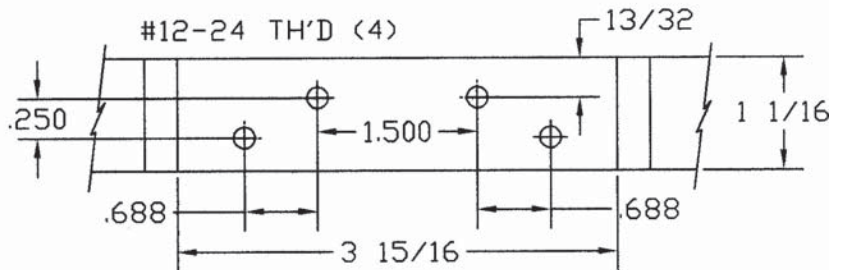
PRS A01



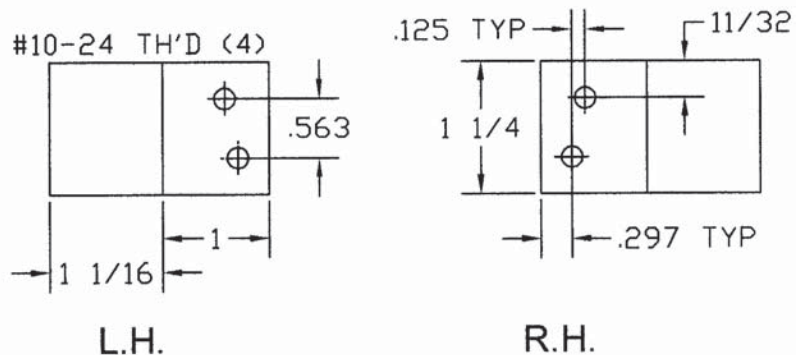
PRR002  
10GA x 1 1/16 x 8 1/2



PRR001  
10GA x 1 1/16 x 8 1/2



HRSS01  
7GA x 1 1/4 x 2 1/16  
x 3/8 OFFSET  
(2 PCS)



**ALL SKETCHES SHOW EARS UP**

